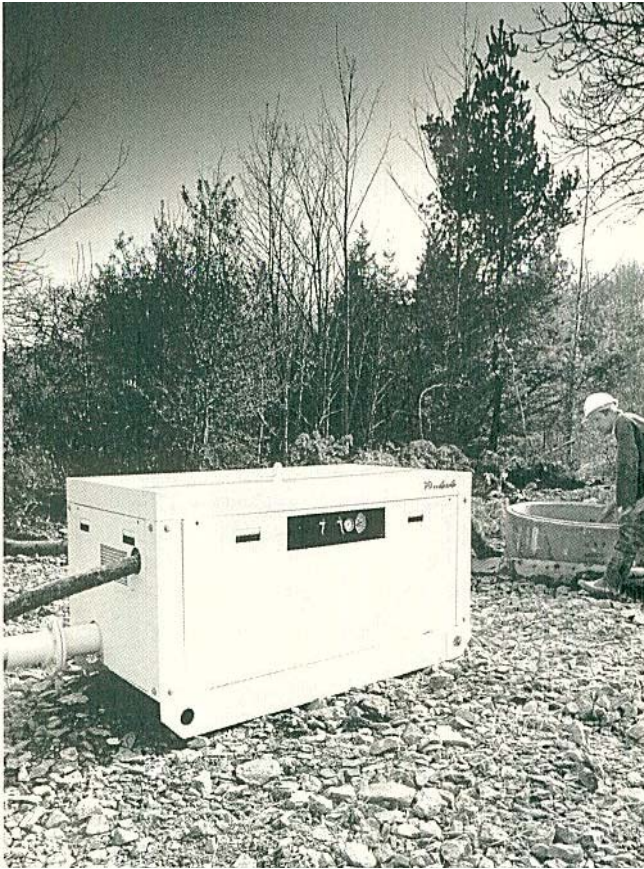


## AIRLOADER PD4x4(300) PUMP



Brain Airloader Pumps are designed for handling heavily solids laden slurries and sludges normally considered impossible with conventional pumps.

The Airloader PD4x4(300) is a portable compressed air powered unit, intrinsically safe and low in height making it particularly suitable for applications in underground mining and tunnelling. It can pass solids up to 80mm in lump size.

Unlike conventional pumps, which rely on vacuum displacement, the Airloader generates a high velocity suction airflow (17cu.mtr.min./600cfm.) combined with a powerful vacuum (-0.88 Bar/26"HG.) resulting in very effective suction performance.

This enables the thickest and most viscous of materials to be suction loaded with horizontal distances in excess of 100 mtrs. and vertical suction lifts of up to 35mtrs. being achievable.

Material is discharged from the pumping vessel by compressed air with transport distances over 1000 mtrs. horizontally and heads of up to 60 mtrs. easily achieved even with high solids content materials.

**PERFORMANCE** - With no moving parts in contact with the material, large lump solids inclusions, waxy, fibrous and abrasive materials may be handled. Performance is dependant on the type of material being handled, the suction lift and the discharge run. Flowable slurries are recovered at a higher rate than viscous sludges.

Typical production rate 10 – 20m<sup>3</sup>/hr.

**APPLICATIONS** - Safe for hazardous area operation and removal of material from confined locations. Typical uses include: - sump cleaning, face slurry removal, pump lodge desilting, winding shaft sump cleaning, tank cleaning, sewer cleaning, culvert cleaning and pond desilting.

**OPERATION** - Automatically controlled by pneumatic timers pre-set to achieve an optimum fill and discharge cycle with manual override capability.

|                                    |   |
|------------------------------------|---|
| <b>MATERIAL SUCTION INLET</b>      | - 100mm male quick connect coupling.                        |
| <b>MATERIAL DISCHARGE OUTLET</b>   | - 100mm shouldered victaulic coupling.                      |
| <b>COMPRESSED AIR SUPPLY INLET</b> | - 50mm BSP female thread to suit choice of coupler.         |
| <b>AIR CONSUMPTION</b>             | - Max. 283ltrs./sec.(600scfm) - Min. 236ltrs./sec.(500scfm) |
| <b>SUPPLY PRESSURE</b>             | - Max. 8.0 BAR (116PSIG) - Min. 4.5BAR (65PSIG)             |

**CONSTRUCTION** - Aluminium free, epoxy painted mild steel, bronze, brass and stainless steel.

**DIMENSIONS** - 1840L x 935W x 840H. Weight - 800 Kg.

**For further information please contact:**