

## AIRLOADER GD4x10(250)

Brain Airloader Pumps are designed for handling heavily solids laden slurries and sludges normally considered impossible with conventional pumps.

The Airloader GD4x10(250) is a portable compressed air powered unit, intrinsically safe and adjustable in height, making it suitable for multiple applications. It can pass large diameter solids up to 80mm in lump size.

Unlike conventional pumps, which rely on vacuum displacement, the Airloader generates a high velocity suction airflow (19cu.m.min./600cfm.) combined with a powerful vacuum (-0.85Bar/25" Hg) resulting in a very effective suction performance.

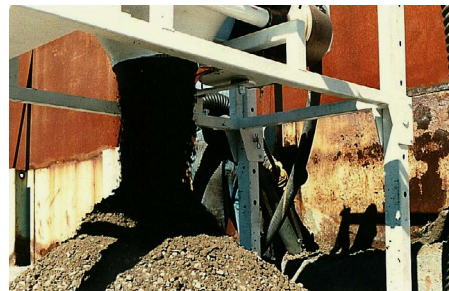
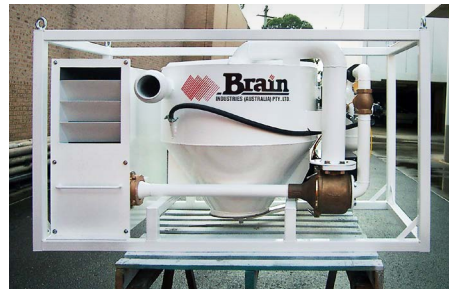
This enables the thickest, most viscous, solids laden materials to be suction loaded through 35m of vertical suction lift (using the pneumatic conveying technique) and/or up to 100m. horizontally from the unit.

Material is gravity dumped from the collection vessel through a 250mm (10") valve providing inherently safe non-pressurised discharge onto a conveyor belt, skip or bin for transport away.

**PERFORMANCE** - With no moving parts in contact with the material, large lump solids inclusions, waxy, fibrous and abrasive materials may be handled. Performance is dependant on the type of material being handled, the suction lift and the air supply. Flowable slurries are recovered at a higher rate than viscous sludges.

Typical production rate 10 – 15m<sup>3</sup>/hr.

**APPLICATIONS** - Safe for hazardous area operation and removal of material from confined locations. Typical uses include: - Tank cleaning, tunnel invert cleaning, sump cleaning, face slurry removal, pump lodge de-silting, winding shaft sump cleaning, sewer cleaning, culvert cleaning and pond de-silting.



**OPERATION** - Automatically controlled by pneumatic timers pre-set to achieve an optimum fill and discharge cycle with manual override capability.

**MATERIAL SUCTION INLET** - 80mm male quick connect coupling.

**MATERIAL DISCHARGE OUTLET** - 250mm (10") air actuated valve.

**COMPRESSED AIR SUPPLY INLET** - 50mm (2") BSP female thread.

**AIR CONSUMPTION** - Max. 280ltrs./sec.(600scfm) - Min. 140ltrs./sec.(300scfm)

**SUPPLY PRESSURE** - Max. 8.0 BAR (116PSIG) - Min. 4.5BAR (65PSIG)

**CONSTRUCTION** - Aluminium free, epoxy painted mild steel, bronze, brass and stainless steel.

**DIMENSIONS** - 2010(L) x 925(W) x 1065(H). Weight - 300kg.

We welcome your enquiries

+61 2 4969 2111 | +61 429 916 097 | admin@brainindustries.com.au

Brain Industries (International) Pty Ltd | ABN: 85 610 708 168

brainindustries.com.au